

Ceiling mount bracket for high ceilings

Description

This ceiling mount bracket is to be used when mounting projectors to high ceilings.

Specifications

Vertical correction angle: +5°, -17°
 Horizontal slant correction angle: ±5°
 Horizontal turn correction angle: ±1.2°
 Dimensions (W × H × D): 355 × 339-419 × 306 mm (13-31/32 × 13-11/32-16-1/2 × 12-1/16 inches)
 Weight: 9.1 kg* (20.1 lbs)*
 Applicable projectors: PT-RZ470K/RZ470W/RW430K/RW430W/RZ370/RW330

* Average value. May differ depending on the actual unit.

Weights and dimensions shown are approximate. Specifications and appearance are subject to change without notice.

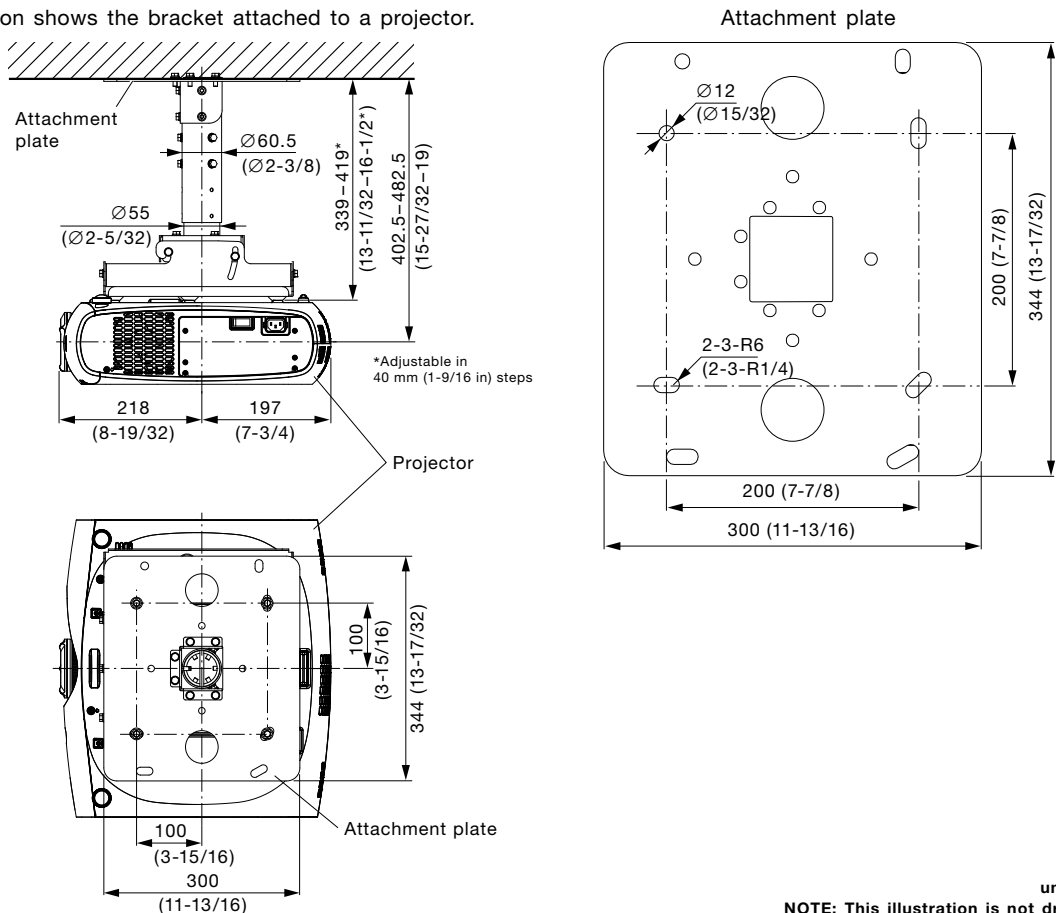
Parts	Attachment plate	1	Washer-fitted hexagonal bolts (M6 × 80)	2
	Projector mount bracket	1	Washer-fitted screws (M4 × 10)	4
	Adjustment pole 1	1	Washer-fitted hexagonal bolts (M6 × 16)	30
	Adjustment pole 2	1	Washer (M6)	2
	Angle adjusting bracket	1	Hexagonal nuts (M6)	2
	Pole brace 1	1	Ceiling mount bracket drop prevention kit	1
	Pole brace 2	1	Projector drop prevention kit	1
	Pole base	1		

Caution:

- Mounting should be done by a qualified technician.
- Make sure that the mounting (ceiling) area has sufficient strength.
- Read the enclosed installation instructions thoroughly before starting.
- Do not use an electric screwdriver or impact driver to tighten screws. (Use a torque driver or similar tool.)
- When the product is no longer going to be used, have it disposed of quickly by a professional disposal service.

Dimensions

Illustration shows the bracket attached to a projector.



unit : mm (inch)
 NOTE: This illustration is not drawn to scale.